

GW Libraries and Academic Innovation

乔治·华盛顿大学图书馆与学术创新部

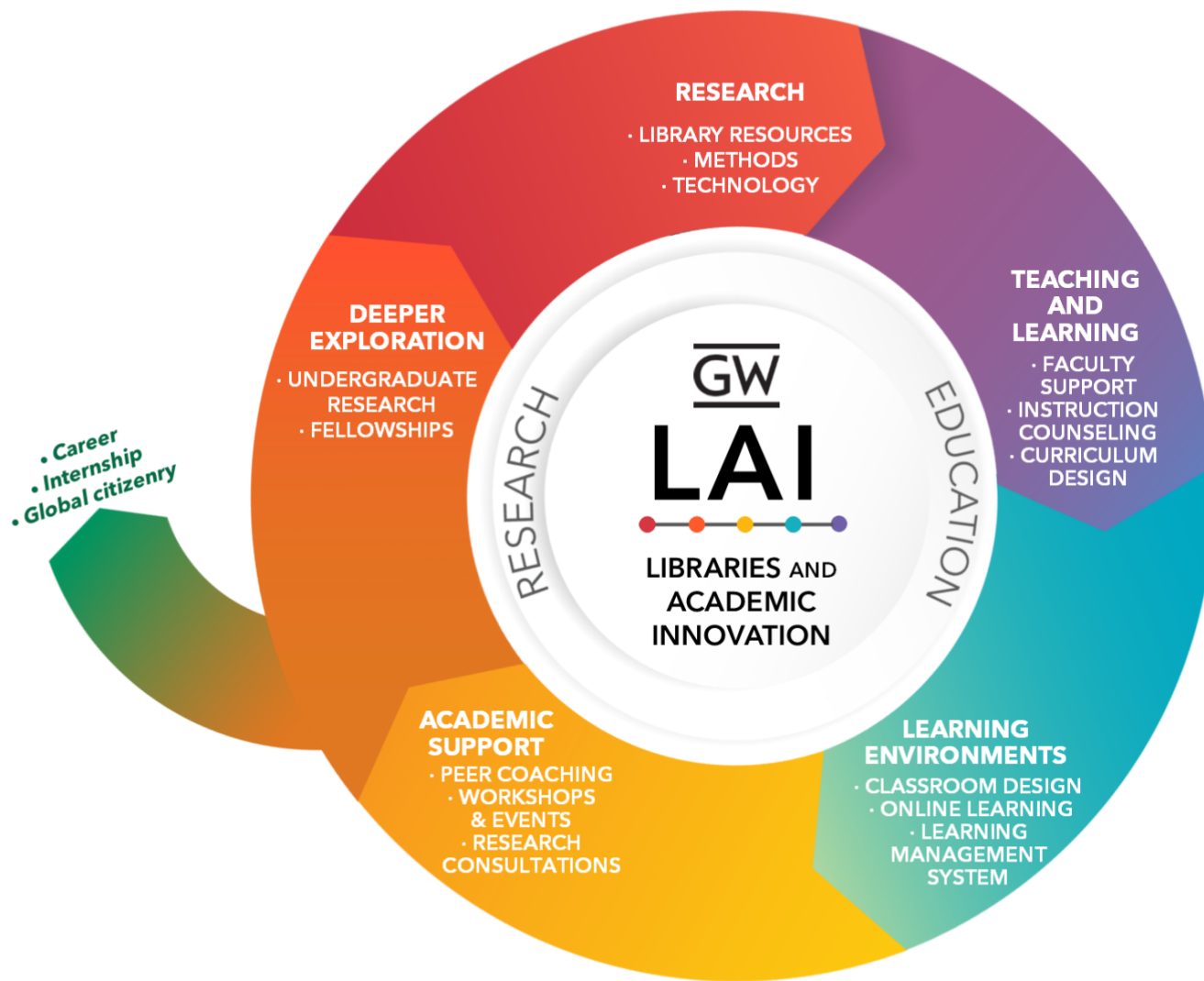
TEACHING AND
LEARNING

LEARNING
ENVIRONMENTS

ACADEMIC
SUPPORT

DEEPER
EXPLORATION

RESEARCH



Signature programs 品牌项目

Course Design Institute 课程设计的中心

Bootcamp-style program to (re)design a course and syllabus in a supportive, peer environment

在同行互助的环境下，以训练营的形式的项目（重新）设计课程与大纲

Teaching Network for Early Career Faculty 青年教师培训的网络

6 Friday sessions, over lunch, spread from October – April, 6次课，周五午饭期间，从10月到4月

Peer review in supportive environment (spring semester) 互助环境下的同行评议（春季学期）

Letter of completion 结业证明



Instructional Technology Lab for faculty

教师教学技术实验室



Libraries &
Academic Innovation

TEACHING AND LEARNING





Faculty Workshops 教师工作坊

We provide a variety of face-to-face and online workshops.

Gain expertise and guidance on how to incorporate instructional technologies into your courses.

Topics include Blackboard, TurningPoint, GW Lecture Capture, and more.

我们提供各种面对面或在线工作坊
得到如何利用教育技术教学的技能和指南
题目包括Blackboard, TurningPoint, GW Lecture Capture



Libraries &
Academic Innovation

TEACHING AND LEARNING



Special tools in Blackboard 特殊工具

Syllabi Repository:
课程大纲存储库

Upload your syllabus! 上传课程大纲
Help students make informed
decisions during course
selection. 帮助学生了解课程设计
合理选课

Photo Roster:
学生相片名册

Get to know your students!
加深对学生的了解



Blackboard

Technology Enhanced Classrooms

智能化教室

What: Academic Technologies supports more than 200 technology enhanced classrooms on three campuses
学术性的技术设备为三个校园200多个智能化教室提供支持

Search: acadtech.gwu.edu/classroom-search

Features: Bring your own device (BYOD) 自带设备
Classroom instructor PC 教室配备主讲人所需的电脑

Additional classroom technology & special features

Wireless Presentation, Web Conferencing, Document Camera, Lecture Capture, Movable chairs, Extended Whiteboard Space, Active Learning Room

其他的教室技术设备和特别功能

无线屏幕显示，网络会议，文件摄影机，讲座录影，可移动座椅，扩展的白板空间，互动式的学习间



Libraries &
Academic Innovation

LEARNING ENVIRONMENTS





Who are we? 我们是谁？

Instructional designers and multimedia professionals supporting the design and development of online courses for the university.
教学设计者与多媒体专家支持网络课程的设计和发展

GW Online Course Development

乔治·华盛顿大学网络课程的发展



The university is responsible for the quality of all online courses 学校提供高质量的网络课程

Coordination across all schools through university-wide online committee线上委员会通过校园网络协调各学院间的合作

Coordination with instructional designers across the campus 协调全校的课程设计者

Assess and review the course 课程评估和审核

all online courses go through a Quality Matters (QM) review per the Faculty Senate resolution passed in Spring 2018 to ensure they meet a high standard为确保质量，所有网络课都由2018年春教授委员会决议通过的QM来审核

In FY18, GW in-house teams developed or did significant refreshes for 92 online courses
2018财年校内团队开发或改版了92门网络课

For first half of FY19, 59 online courses being developed or significantly refreshed by in-house teams 2019财年校内团队上半年开发或改版了59门网络课

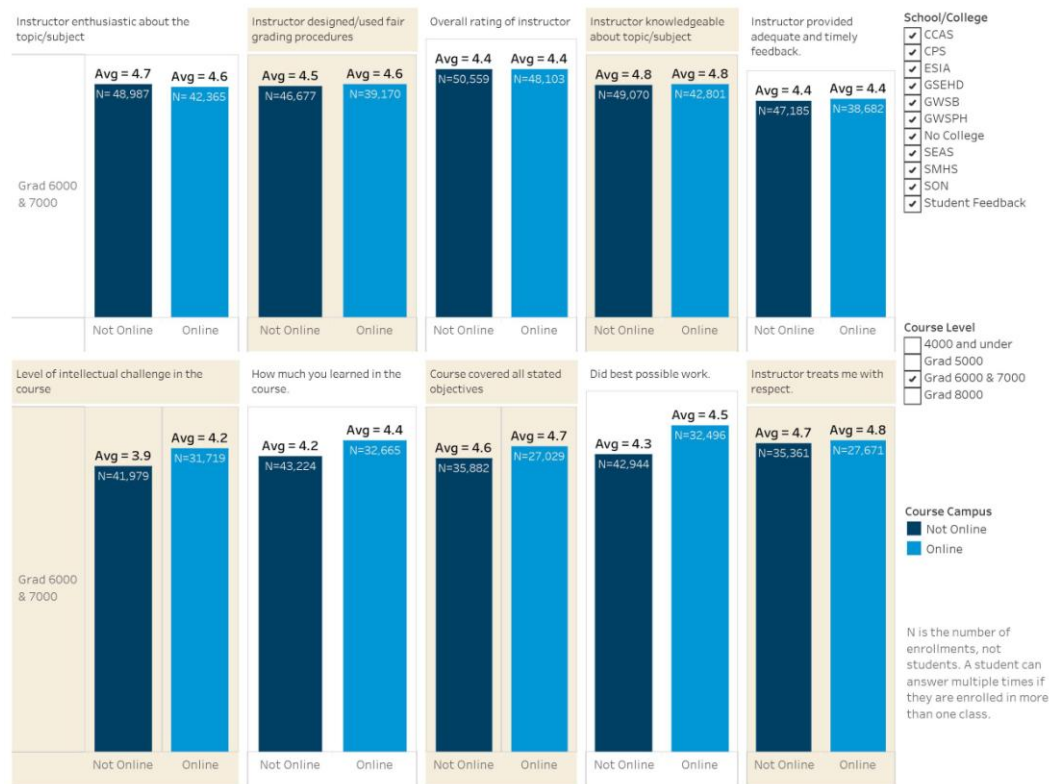
Marketing and recruitment managed by the schools 各学院负责自己的宣传和招聘

Assessment results 评估结果

Student Feedback by Course Delivery Method Spring 2015 - Spring 2017



Office of Survey Research
and Analysis



Libraries &
Academic Innovation

LEARNING ENVIRONMENTS



Academic Commons 学术共享空间

Location
地点: Gelman Entrance Floor 图书馆入口楼层

Website:
网站 AcademicCommons.gwu.edu

Provides:
提供: Academic Commons connects students to academic services and support across GW. 学术共享空间连接学生与全校范围的学术服务与支持

Students can visit our navigators on the entrance floor of Gelman Library to receive personalized help. 图书馆入口层的导航者可以为学生提供各种帮助

Online and in person connection to peer coaching, study skills support, finding study spaces, workshops, academic advising, research opportunities, and more!
通过网上或面对面的咨询寻找互助伙伴, 学习技能支持, 学习空间、工作坊、学术指导、研究机会等信息



Center for Undergraduate Fellowships and Research (CUFR) 本科生奖学金和研究中心

undergraduate.research.gwu.edu



CUFR provides GW undergraduates and alumni with information, guidance and support as they learn about and apply for research opportunities and national fellowship competitions. CUFR为本科生和校友提供信息、指导和支持，帮助他们了解和申请研究机会以及国家级奖学金

Strong alliance with OVPR and partner in sponsoring Research Days to highlight undergraduate research

与主管研究的副校长办公室合作资助“研究日”活动，展现本科生的研究成果



Libraries &
Academic Innovation

DEEPER EXPLORATION



GW Libraries 图书馆

Location地点: Gelman, Eckles, & VSTC 三个馆

Website网站: library.gwu.edu

Provides提供: Traditional library resources 传统图书馆资源

Research consultations and workshops 研究参考咨询和工作坊

Quiet and group study & research spaces 静修、小组和研究学习空间

Public computers with specialized software 安装特别软件的公用电脑
Including Adobe Creative Suite, Stata, ArcGIS, SAS, and more

Tools development to support research 开发工具以支持研究

Analysis of data to understand research impacts 数据分析以理解研究价值

Access to textbooks to support affordability 开放获取教科书以节省费用



Libraries &
Academic Innovation

RESEARCH



Workshops & Consultations 工作坊与咨询



Research consultations in 提供如下研究咨询：

GIS

Research Data Management

研究型数据管理

3-D Printing 3-D 打印

Statistics 统计

Information Resources 信息资源

Primary Source Materials 原始材料

141 sessions of 94 separate workshops offered in Fall 2018
2018年秋季开设94种工作坊，共计141次

A photograph of two women sitting at a table, engaged in conversation. The woman on the left has long dark hair and is wearing a pink top. The woman on the right has short grey hair and is wearing a blue top with a dark jacket. Both have name tags. The background is blurred, showing other people at a conference.

Your turn

What are your questions? 请您提问